



# TIIG

INJURY SURVEILLANCE IN THE NORTH WEST OF ENGLAND

## ROYAL BOLTON HOSPITAL EMERGENCY DEPARTMENT

### MONTHLY BULLETIN: OCTOBER 2013 TO SEPTEMBER 2014

This bulletin provides a breakdown of all injury attendances to Royal Bolton Hospital Emergency Department (ED) between October 2013 and September 2014.

During this twelve month period there were 44,962 injury attendances to the ED. The month with the highest number of attendances, calculated as a daily average, was November 2013 (137 per day) with August 2014 having the lowest attendances (99 per day; **Figure 1**).

Males accounted for over half (51%) of all injury attendances (**Figure 1**) and the highest proportion of attendances were for those aged between 20 and 34 years (24%; **Figure 2**).

The majority (79%) of attendances were recorded as other injury. Falls accounted for 8% of attendances, road traffic collisions (RTCs) and sports injuries each accounted for 3% (**Table 1**).

Close to half (49%) of fall attendees were aged 65 years or over, approximately six in ten (59%) sports injury attendees were aged between five and 19 years and close to four in ten (39%) RTC attendees were aged between 20 and 34 years (**Figure 3**).

**Table 2** shows the ethnicity of injury attendees to Royal Bolton Hospital ED. The majority (71%) were White.

The disposal of a patient can give an indication of the severity of the injuries sustained. Over four in ten (42%) attendees were discharged, 34% were

referred for further treatment and 19% were admitted to hospital (**Table 3**). Six in ten (60%) RTC attendees were discharged, the same proportion (60%) of burns and scald attendees were referred for follow-up treatment and a third (33%) of deliberate self-harm (DSH) attendees were admitted to hospital (**Table 4**).

**Table 5** shows the arrival method of attendances to Royal Bolton Hospital ED. The majority (74%) arrived by foot while just over a quarter (26%) arrived by ambulance.

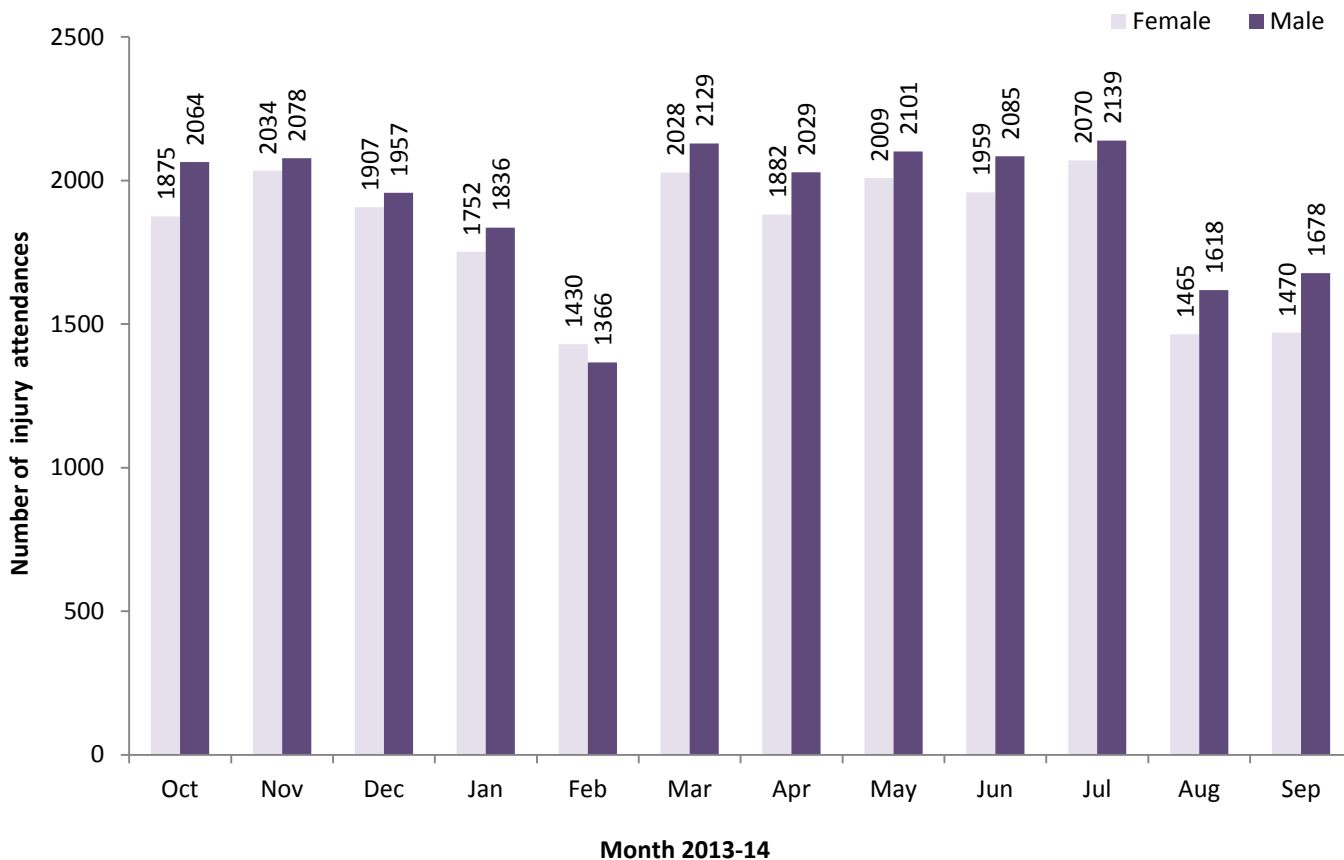
**Table 6** shows the incident location of injury attendances. Just over six in ten (61%) occurred in the home while 8% occurred in a public place.

#### **Assault attendances**

Between October 2013 and September 2014 there were 1,003 assault-related injury attendances to Royal Bolton Hospital ED.

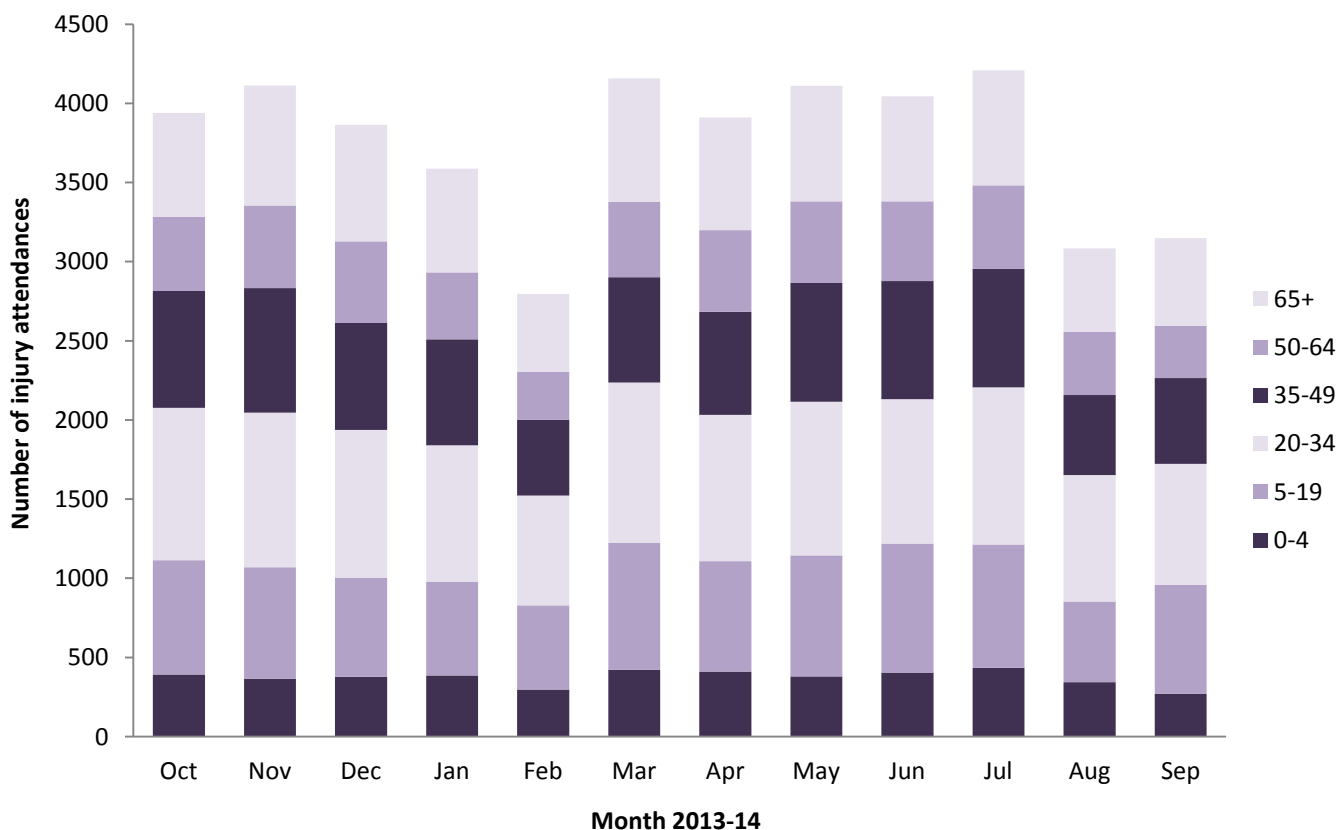
Close to seven in ten (69%) were male and 46% were aged between 20 and 34 years. Over half (53%) of assault attendees arrived at the ED by foot and under half (47%) arrived by ambulance (**Table 7**). Over six in ten (62%) assaults occurred in the home.

Figure 1: ED injury attendances by gender and month, October 2013 to September 2014<sup>^</sup>



<sup>^</sup> There were <5 records where the gender was unknown; these have been omitted from the chart.

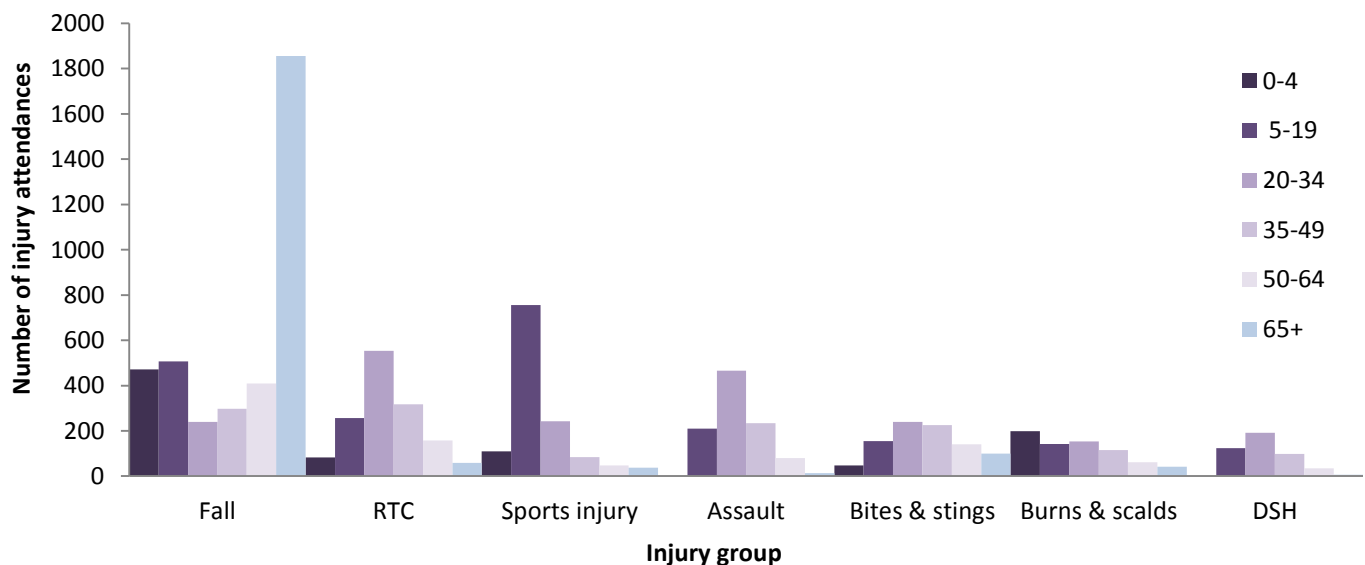
Figure 2: ED injury attendances by age group and month, October 2013 to September 2014



**Table 1: ED injury attendances by injury group and month, October 2013 to September 2014**

Injury group	Oct	Nov	Dec	Jan	Feb	Mar	Apr	May	Jun	Jul	Aug	Sep	Total	%
Other injury	3209	3348	3171	2871	2145	3221	3106	3316	3156	3272	2275	2309	35399	79
Fall	260	274	287	279	269	377	338	301	350	378	341	325	3779	8
RTC	101	125	105	113	98	130	141	128	129	96	129	130	1425	3
Sports injury	132	114	77	117	97	160	94	92	116	124	53	103	1279	3
Assault	99	87	91	72	58	91	75	103	79	96	79	73	1003	2
Bites & stings	62	47	48	41	37	66	68	78	108	141	117	96	909	2
Burns & scalds	51	68	46	57	62	68	51	54	72	63	60	61	713	2
DSH	25	49	39	38	30	44	38	39	34	39	29	51	455	1
<b>Total</b>	<b>3939</b>	<b>4112</b>	<b>3864</b>	<b>3588</b>	<b>2796</b>	<b>4157</b>	<b>3911</b>	<b>4111</b>	<b>4044</b>	<b>4209</b>	<b>3083</b>	<b>3148</b>	<b>44962</b>	<b>100</b>

**Figure 3: ED injury attendances by age group and injury group (excluding other injury), October 2013 to September 2014**



**Table 2: ED injury attendances by ethnicity and month, October 2013 to September 2014<sup>1,2</sup>**

Ethnicity	Oct	Nov	Dec	Jan	Feb	Mar	Apr	May	Jun	Jul	Aug	Sep	Total	%
White	2761	2999	2760	2568	1967	2974	2764	2998	2830	3029	2161	2210	32021	71
Not stated	401	420	367	377	295	427	409	396	456	467	352	362	4729	11
Not known	385	329	371	313	272	386	362	340	358	350	279	263	4008	9
Pakistani	147	131	118	114	99	123	135	123	127	130	105	104	1456	3
Indian	98	116	111	104	74	118	126	136	146	110	93	101	1333	3
Mixed	35	34	35	29	28	36	29	27	42	34	25	28	382	1
Black	38	29	40	24	21	31	34	23	33	30	22	21	346	1
Any other ethnic group	36	28	29	23	15	30	22	28	25	25	24	30	315	1
Any other Asian Background	30	16	23	25	18	19	21	23	18	18	16	23	250	1
Chinese	<10	5	***	***	***	6	<10	9	<10	10	***	<10	65	0
Bangladeshi	***	5	<10	<10	***	7	***	8	***	6	***	***	57	0
<b>Total</b>	<b>3939</b>	<b>4112</b>	<b>3864</b>	<b>3588</b>	<b>2796</b>	<b>4157</b>	<b>3911</b>	<b>4111</b>	<b>4044</b>	<b>4209</b>	<b>3083</b>	<b>3148</b>	<b>44962</b>	<b>100</b>

<sup>1</sup> Please note that for all tables, all numbers less than five have been suppressed (with \*\*\*) in line with patient confidentiality. If there is only one number less than five in a category then two numbers will be suppressed to prevent back calculation from totals.

<sup>2</sup> White = Irish, British, other White background; Mixed = White and Black, White and Asian, mixed - any other; Black = African, Caribbean, other Black.

**Table 3: ED injury attendances by disposal method and month, October 2013 to September 2014<sup>3</sup>**

Disposal method	Oct	Nov	Dec	Jan	Feb	Mar	Apr	May	Jun	Jul	Aug	Sep	Total	%
Discharged	1590	1541	1503	1500	1223	1683	1605	1715	1705	1852	1406	1450	18773	42
Referral/follow-up	1433	1558	1339	1202	921	1481	1362	1380	1437	1414	967	987	15481	34
Admitted	721	801	780	713	534	784	744	807	702	739	554	547	8426	19
Other	195	212	242	173	118	209	200	209	200	204	156	164	2282	5
<b>Total</b>	<b>3939</b>	<b>4112</b>	<b>3864</b>	<b>3588</b>	<b>2796</b>	<b>4157</b>	<b>3911</b>	<b>4111</b>	<b>4044</b>	<b>4209</b>	<b>3083</b>	<b>3148</b>	<b>44962</b>	<b>100</b>

**Table 4: ED injury attendances by disposal method and injury group (excluding other injury), October 2013 to September 2014<sup>3</sup>**

Disposal method	Assault		Bites & stings		Burns & scalds		DSH		Fall		RTC		Sports injury		Total	
	n	%	n	%	n	%	n	%	n	%	n	%	n	%	n	%
Discharged	509	51	527	58	227	32	98	22	1520	40	852	60	667	52	4400	46
Referral/follow-up	303	30	299	33	427	60	130	29	967	26	478	34	492	38	3096	32
Admitted	62	6	33	4	6	1	152	33	1068	28	47	3	84	7	1452	15
Other	129	13	50	6	53	7	75	16	224	6	48	3	36	3	615	6
<b>Total</b>	<b>1003</b>	<b>100</b>	<b>909</b>	<b>100</b>	<b>713</b>	<b>100</b>	<b>455</b>	<b>100</b>	<b>3779</b>	<b>100</b>	<b>1425</b>	<b>100</b>	<b>1279</b>	<b>100</b>	<b>9563</b>	<b>100</b>

**Table 5: ED injury attendances by mode of arrival and month, October 2013 to September 2014<sup>1</sup>**

Arrival mode	Oct	Nov	Dec	Jan	Feb	Mar	Apr	May	Jun	Jul	Aug	Sep	Total	%
Foot	2923	3031	2799	2635	2079	3102	2892	3036	3069	3180	2230	2350	33326	74
Ambulance	1004	1067	1053	944	711	<1060	<1020	1070	<980	<1030	<860	<800	11559	26
Other	12	14	12	9	6	***	***	5	***	***	***	***	77	0
<b>Total</b>	<b>3939</b>	<b>4112</b>	<b>3864</b>	<b>3588</b>	<b>2796</b>	<b>4157</b>	<b>3911</b>	<b>4111</b>	<b>4044</b>	<b>4209</b>	<b>3083</b>	<b>3148</b>	<b>44962</b>	<b>100</b>

**Table 6: ED injury attendances by incident location and injury group (excluding other injury), October 2013 to September 2014<sup>1</sup>**

Incident location	Assault		Bites and stings		Burns and scalds		DSH		Fall		RTC		Sports injury		Total	
	n	%	n	%	n	%	n	%	n	%	n	%	n	%	n	%
Home	618	62	589	65	563	79	395	87	2571	68	477	33	597	47	5810	61
Other	263	26	275	30	122	17	42	9	955	25	478	34	119	9	2254	24
Public place	88	9	23	3	***	0	12	3	<90	2	460	32	129	10	803	8
Educational establishment	13	1	***	0	***	0	6	1	121	3	7	0	304	24	456	5
Leisure facility	***	0	***	0	***	0	0	0	21	1	***	0	126	10	154	2
Work	18	2	16	2	23	3	0	0	20	1	***	0	***	0	<90	1
Not specified	***	0	0	0	0	0	0	0	***	0	0	0	***	0	***	0
<b>Total</b>	<b>1003</b>	<b>100</b>	<b>909</b>	<b>100</b>	<b>713</b>	<b>100</b>	<b>455</b>	<b>100</b>	<b>3779</b>	<b>100</b>	<b>1425</b>	<b>100</b>	<b>1279</b>	<b>100</b>	<b>9563</b>	<b>100</b>

<sup>3</sup> Admitted = admitted to ED bed/became a lodged patient of the same health care provider; Discharged = discharged - did not require any follow-up treatment; Referral/follow-up = discharged - follow-up treatment to be provided by GP, referred to ED clinic, referred to fracture clinic, referred to other out-patient clinic, transferred to other health care provider, referred to other health care professional; Other = died in department, left department before being treated, left department having refused treatment, other.

## ASSAULTS

**Table 7: ED assault attendances by gender, arrival mode and age group, October 2013 to September 2014<sup>1</sup>**

	Assault attendances (n=1,003)		All injury attendances (n=44,962)
	n	%	%
<b>Gender</b>			
Male	694	69	51
Female	309	31	49
<b>Arrival mode</b>			
Foot	528	53	74
Ambulance	<480	47	26
Other	***	0	0
<b>Age group</b>			
0 - 4	0	0	10
5-19	210	21	18
20 – 34	466	46	24
35 - 49	234	23	18
50 - 64	80	8	12
65 plus	13	1	18

Published January 2015

Trauma and Injury Intelligence Group

Centre for Public Health, Faculty of Education, Health and Community, Liverpool John Moores University,  
2nd Floor, Henry Cotton Building, Liverpool L3 2ET

T: 0151 231 4498 | E: [tiig@ljmu.ac.uk](mailto:tiig@ljmu.ac.uk) | W: [www.tiig.info](http://www.tiig.info) and [www.cph.org.uk](http://www.cph.org.uk) | Twitter: [www.twitter.com/tiig\\_cph](https://twitter.com/tiig_cph)